

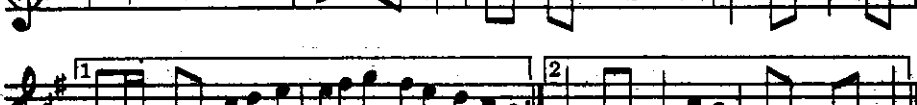
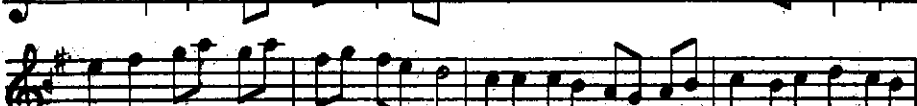
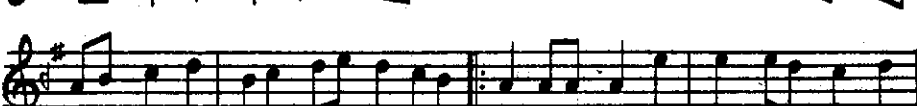
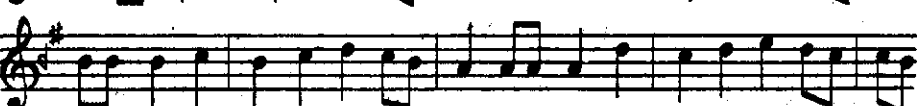
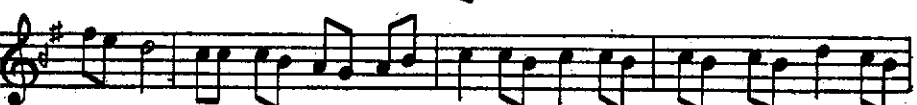
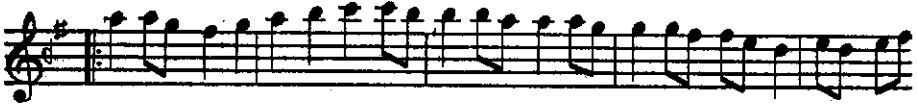
Piğrev-i Hasan Can, der makaam-ı mezbur (hüseyinî), (nüşa 1)

(M. M. ♩ = 120)

Ser-hâne

Ali Ufkî, vr. 26 b-27 a

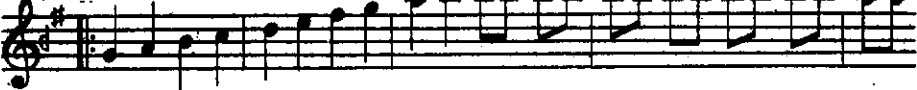
usûleş düyek



Son



Hâne-i sâni



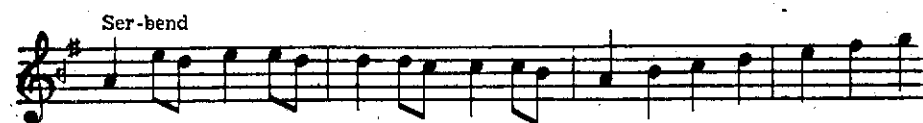
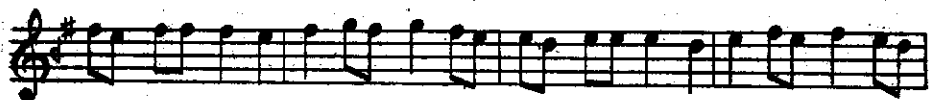
1 2


Häne-i säib

1 2

1

2



 imyKool